

DAVID GROSSMANN



OH BE JOYFUL GALLERY

*at Crested Butte*





**David Grossmann** *Across the Spring Patchwork*, 30 x 50, oil  
(featured on front and back cover)

David Grossmann designs his paintings like a poet uses words. Carefully chosen, every word or brushstroke counts. Elegantly composed, they reveal the beauty we might overlook in everyday life.

Capturing fleeting moments; a setting moon, the changing of seasons, a glimpse of a blackbird or doe, a patch quilt of aspen. His paintings celebrate the brevity of life and reflect the passage of time.

Last fall David rode along on a pack trip the gallery organized into the Wilderness around Crested Butte. Many of these paintings were born out of that adventure into the magnificent aspen grove over Kebler Pass.

*visit our website at [ohbejoyfulgallery.com](http://ohbejoyfulgallery.com) for details*



*Morning Cows Near Crested Butte*, 7 x 12, oil



*Autumn Moon Setting Near Kebler Pass*, 8 x 6, oil





*Hillside with Flowers Near Brush Creek, 24 x 18, oil (detail)*

DAVID GROSSMAN



*Crested Butte and Morning Pasture, 6 x 8, oil*



*Path and Wildflowers, 8 x 6, oil*

OH BE JOYFUL GALLERY AT CRESTED BUTTE





*Moon Rising Near Kebler Pass, 40x 30, oil (detail)*



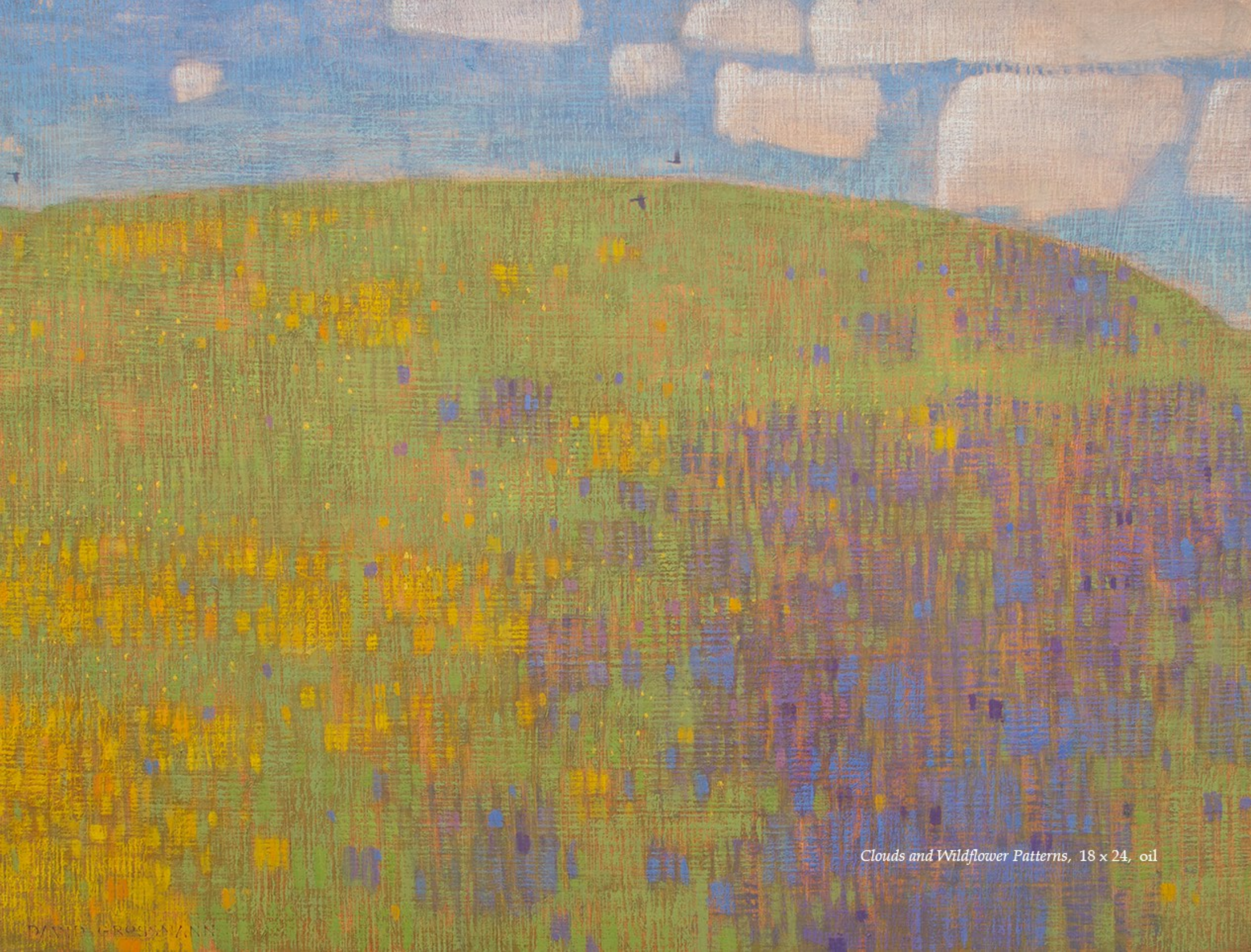
*Hill with Pines and Fallen Aspen Leaves, 8 x 10, oil*



*Aspen Saplings in Autumn Morning Colors, 8 x 6, oil*

OH BE JOYFUL GALLERY AT CRESTED BUTTE





*Clouds and Wildflower Patterns, 18 x 24, oil*





*Spring Encounter, 40 x 30, oil (detail)*



*Sun Through Summer Aspen Leaves, 10 x 8, oil*



*Brush Creek View, 6 x 8, oil*

OH BE JOYFUL GALLERY AT CRESTED BUTTE





*Morning Light with Moon and Autumn Leaves, 8 x 6, oil (detail)*



*Kebler Pass Groves in Afternoon Light, 6 x 8, oil*



*Autumn Meadow Light, 8 x 10, oil*





*Valley Dawn with Mist, 8 x 6, oil (detail)*



*Late Summer Forest with Setting Sun, 6 x 8, oil*



*Morning Autumn Sun Near Kebler Pass, 6 x 8, oil*



An abstract painting featuring vertical stripes of brown and green. The brown stripes are on the left and right sides, while the green stripes are in the center. The stripes are of varying widths and are separated by thin white lines. The overall effect is a rhythmic, textured pattern.

226 Elk Ave. & 409 Third Street  
P.O. Box 453, Crested Butte, Colorado 81224  
email: [cb@ohbejoyfulgallery.com](mailto:cb@ohbejoyfulgallery.com)  
970 349-5936

[OHBEJOYFULGALLERY.COM](http://OHBEJOYFULGALLERY.COM)