

An impressionistic oil painting of a landscape. In the foreground, a large, vibrant tree with yellow and orange foliage stands on the right bank of a river. The river flows from the left towards the center, its surface reflecting the sky and surrounding landscape. The middle ground shows a wide, sandy or silty riverbank with scattered trees and shrubs in autumnal colors. In the background, rolling hills and mountains are visible under a pale blue sky. The overall style is characterized by thick, expressive brushstrokes and a rich, warm color palette.

WALT GONSKE



OH BE JOYFUL  
GALLERY  
*at Crested Butte*



Works by  
**WALT GONSKE**

*"I try to portray the same emotional reaction I experience while creating a piece in the painting itself... The finished product is made up of one impulse after another. When I simply work and leave the paint alone, the painting is able to express a record of all the emotional moments I feel during the process."*

- Walt Gonske



*Mid April in Taos, 16 x 20, oil*

 **OH BE JOYFUL GALLERY**  
*at Crested Butte*

For additional information and works visit  
[OHBEJOYFULGALLERY.COM](http://OHBEJOYFULGALLERY.COM)

Please call the gallery for availability at (970) 349-5936

**Cover Spread:** *After a Fall Shower* 12 x 16, oil (detail)





*On Coal Creek 16 x 20, oil*



*Ranchos de Taos 16 x 20, oil*





*A Summer Morning, 28 x 24, oil*

*"The end result is not about that first idea, but instead a record of all those impulses along the way. Each stroke of paint carries emotion and power. I work in a loose, painterly style in part because I want the viewer to see the process and not hide it behind 'finish' - for the viewer to maybe even feel how a particular piece of paint was put down. My goal is not to show what I know, but what I feel."*

- Walt Gonske



*Floral Arrangement, 26 x 22, oil*





Vista From El Prado, 18 x 24, oil

Gonsky





*The North Rim at Kneeling Camel Rock, 30 x 34, oil*



*Little Mill Creek, 16 x 20, oil*



*The Black Canyon from Tomichi Point, 30 x 34, oil*

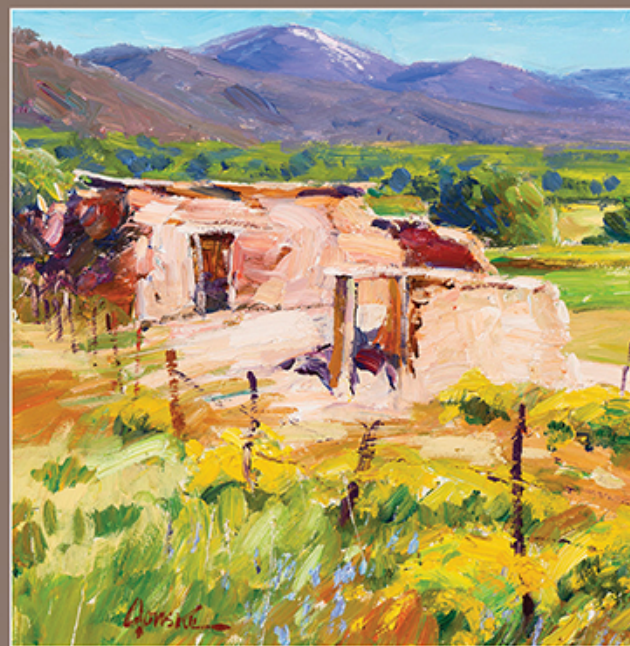




Up Wolf Creek Pass  
28 x 24  
oil (detail)



Young Cottonwoods 18 x 24, oil



Picuris Pueblo Land 12 x 12, oil





*Late in the Fall, 14 x 18, oil*



*Mora Valley, 6 x 8, oil*

OH BE JOYFUL GALLERY AT CRESTED BUTTE



Portrait by Gary Kim, 2014 (private collection)

The opportunity to see Walt's studios, both his main space and the paintmobile pictured above, was a glance into the inspiration he is surrounded by during the creative process. Walt has been utilizing paintmobiles since the 1980s, which allow him to directly observe and paint outdoor scenes without the risk of unpredictable weather or less than ideal painting conditions.





Oh Be Joyful Gallery  
409 Third Street | P.O. Box 483  
Crested Butte, CO 81224  
(970) 349-5936 | [oh@ohbejoyfulgallery.com](mailto:oh@ohbejoyfulgallery.com)  
[ohbejoyfulgallery.com](http://ohbejoyfulgallery.com)

LOCHSKO